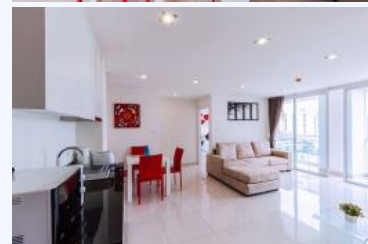
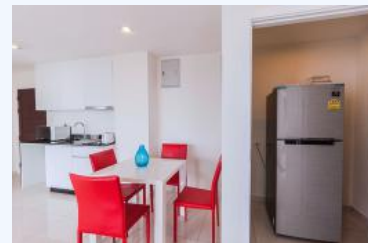


CR048, CONDO FOR RENT - ART ON THE HILL, TWO BEDROOM AT PATTAYA

RENT. ? 35,000.00 /Per month



Pratumnak Soi 5, Pattaya, Pratumnak, 20150, Pattaya

The Art on the Hill on Soi 5 Pratumnak, Pattaya, Two bedroom Condo with a usable area of approximately 80 sq.m you will also be able to enjoy the rooftop swimming pool and fitness center

TWO BEDROOM - 80 sqm SWIMMING SEA VIEW FULLY FURNISHED LONG TERM NET RATES

2016 RATE 1 Month 50,000 3 Month 45,000 6 Month 40,000 12 Month 35,000 Rates NOT INCLUDE: -

Electricity - Cleaning - Laundry Rates INCLUDE: - Internet Fully furnished suite located in The Art on The

Hill Condo development located just off of Soi 5 on Pratumnak Hill Pattaya. Known as the "Beverly Hills" of

Pattaya. Studio includes a private balcony overlooking the tropical flora surrounding the complex. While

living in The Art on The Hill you will also be able to enjoy the rooftop swimming pool and fitness center, as

well as, the open air atrium and coffee shop on the ground floor. A great unit for those of you who are

looking for a holiday home or a perfect rental unit. This fully furnished unit is located on the 3rd floor facing

South towards Jomtien. Please contact us for more information about this unit. Art on the Hill is inspired by the

great post modernism artist Piet Mondrian and the out and inside of this striking building, located at

Pattaya's prime location on the Pratumnak Hill, are a reflection of his paintings. Art on the Hill offers a roof

top swimming pool with a grand sea view and across Pattaya, a sun deck, a fully equipped gym / fitness and a

Café in the atrium to enjoy a Cappuccino on the ground floor. Pratumnak is an exclusive suburb only 5

minutes to the ever popular Jomtien and the beautiful sandy beaches – a Thai Royal princess has a residence

in Pratumnak – if you're thinking of Pattaya's answer to Beverly Hills, you wouldn't be far off!! There are

stunning sea views from the roof top swimming pool lounge and free internet WiFi connection through the

building. Tourist attraction in Pattaya - 10 Min 900m by Walk from View point Pratumnak - 15 Min by Walk

from Cosy Beach - 8 Min by Car Walking Street Pattaya - 8 Min by Car from Jomtien Beach - 10 Min by Car

from Louis Tussaud's Wax Museum - 10 Min by Car from Pattaya Beach - 10 Min by Car from Dongtan

Beach - 14 Min by Car from Underwater World - 15 Min by Car from Ripley's Believe It or Not - 15 Min by

Car from Pattaya Floating Market - 20 Min by Car from Wongamat Beach - 20 Min by Car from Alcazar

Ladyboys Show - 20 Min by Car from Tiffany Cabaret - 20 Min by Car from Pattaya Elephant Village - 20

Min by Car from Thai Alangkarn Theater Pattaya - 20 Min by Car from Mimosas Pattaya - 20 Min by Car

from Teddy Bear Museum - 20 Min by Car from 3D Art in Paradise - 25 Min by Car Na Jomtien Beach - 30

Min by Car from Sanctuary of Truth - 30 Min by Car from Nong Nooch Tropical - 30 Min by Car from Wat

Yannasangwararam - 30 Min by Car from Pattaya Dolphin World - 30 Min by Car from Mini Siam - 30 Min

by Car from Viharnra Sien - 30 Min by Car from Pattaya Sheep Farm - 30 Min by Car from Cartoon Network

Amazon - 35 Min by Car from Milion Years Stone Park - 35 Min by Car from Silverlake vineyard - 35 Min by

Car from Khao Chee chan - 35 Min by Car from Thai Thani Arts and Culture Village Pattaya - 40 Min by

Car from Bira Circuit Auto racing - 50 Min by Car from Sriracha Tiger Zoo

BASE INFORMATION:

Rooms : 3

Bed : 2

Bath : 2

LAND INFORMATION:

Square : 80

meters

CONVENIENCE: